

Starting the Trip

Rudolf Mauz

Musical notation for 'Starting the Trip' in E-flat major, 4/4 time. The first staff shows the main melody. The second staff starts at measure 6 and includes first and second endings. The first ending leads back to the beginning of the second staff, and the second ending concludes the piece.

Open your Mind

Rudolf Mauz

Musical notation for 'Open your Mind' in E-flat major, 4/4 time. The first staff shows the main melody. The second staff starts at measure 5 and includes first and second endings. The first ending leads back to the beginning of the second staff, and the second ending concludes the piece.

Playing now the Blues hey man

Rudolf Mauz

Musical notation for 'Playing now the Blues hey man' in E-flat major, 4/4 time. The first staff includes a triplet notation: $\text{quarter} = \text{quarter} \text{ triplet}$. The second staff starts at measure 5. The third staff starts at measure 9 and includes first and second endings. The first ending leads back to the beginning of the third staff, and the second ending concludes the piece.

Doin' the Right Thing

Rudolf Mauz

Musical notation for 'Doin' the Right Thing' in E-flat major, 4/4 time. The first staff includes a triplet notation: $\text{quarter} = \text{quarter} \text{ triplet}$. The second staff starts at measure 5 and includes first and second endings. The first ending leads back to the beginning of the second staff, and the second ending concludes the piece.

Starting a New Trip

Rudolf Mauz

Musical score for 'Starting a New Trip' in E-flat major, 4/4 time. The score consists of two staves. The first staff contains measures 1 through 5. The second staff starts at measure 6 and includes a first ending (1.) and a second ending (2.) with repeat signs. The first ending ends with a fermata, and the second ending ends with a fermata. There are accents (>) and an accent (^) over notes in the second ending.

City Rock

Rudolf Mauz

Musical score for 'City Rock' in E-flat major, 4/4 time. The score consists of two staves. The first staff starts with a *simile* marking and contains measures 1 through 4. The second staff starts at measure 5 and includes a first ending (1.) and a second ending (2.) with repeat signs. There is an accent (>) over the first note of the first measure.

It's Raining in the South

Rudolf Mauz

Musical score for 'It's Raining in the South' in E-flat major, 4/4 time. The score consists of three staves. The first staff starts with a triplet notation (♩ = ♩♩♩) and contains measures 1 through 4. The second staff contains measures 5 through 8. The third staff starts at measure 9 and includes a first ending (1.) and a second ending (2.) with repeat signs.

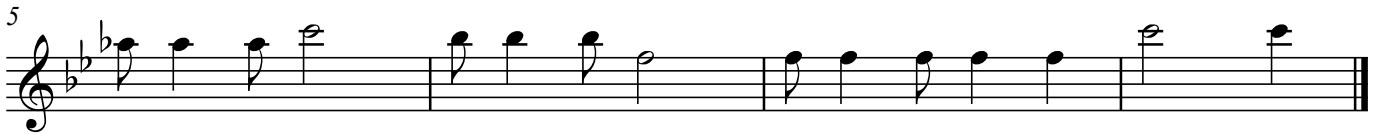
Happy in the Sun

Rudolf Mauz

Musical score for 'Happy in the Sun' in E-flat major, 4/4 time. The score consists of two staves. The first staff contains measures 1 through 3. The second staff starts at measure 4 and includes a first ending (1.) and a second ending (2.) with repeat signs. There is a fermata over the final note of the second ending.

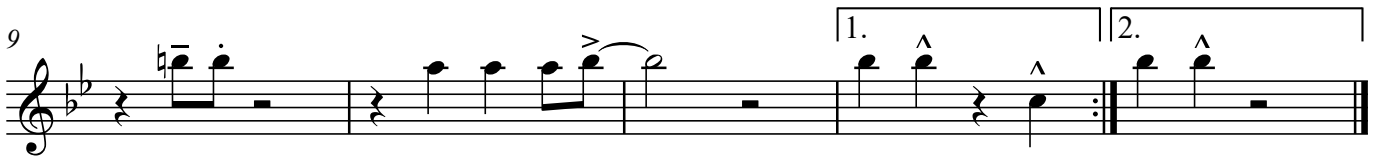
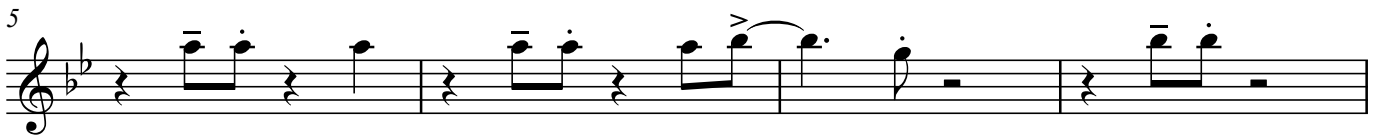
Boruch ato bo'ir

Rudolf Mauz



Early Bird

Rudolf Mauz



The New World Bossa

Rudolf Mauz

