

## **WOODWIND INSTRUMENTS**

### Parts Reference Guide

- ***C Flute***

***JFL-511R, RB***

***JFL-513R, JFL-515R***

***JFL-611R, RB***

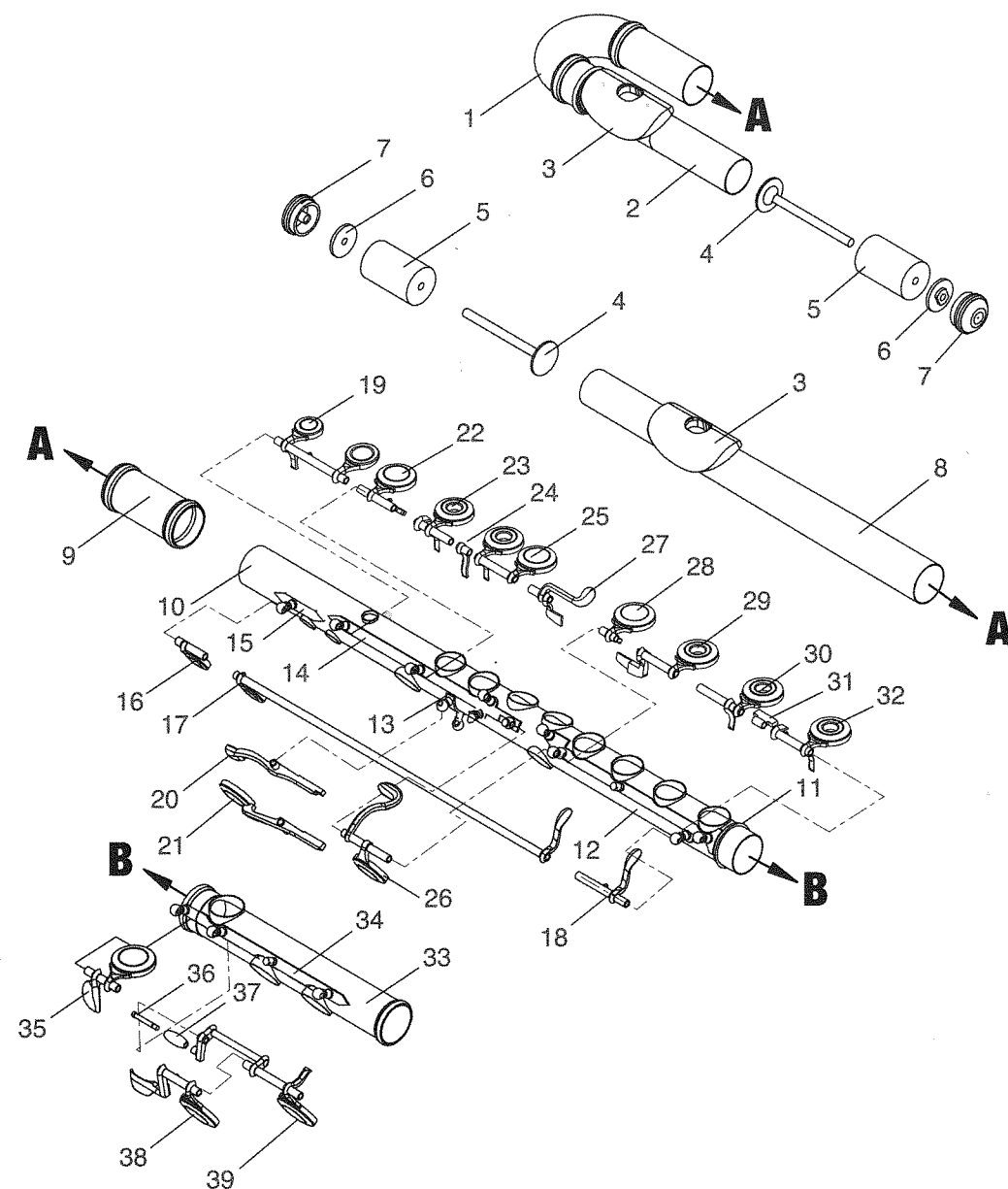
***JFL-711R, RB***

# • C Flute (1)

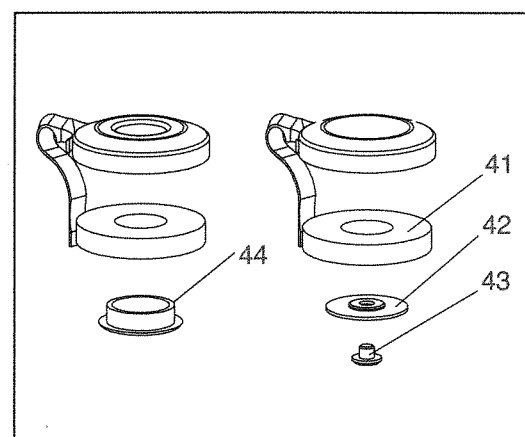
JFL-511R, RB, JFL-513R, JFL-515R, JFL-611R, RB, JFL-711R, RB

Dia. Ref.	Part No	Description	Dia. Ref.	Part No	Description
1	51-U001	Bow headjoint ass'y for 513R,515R curved headjoint	23	51-K033	A key (prior to ser. #200001 & having mod.# beginning with SFL-)
2	51-N015	Straight headjoint ass'y for 513R,515R curved headjoint	24	51-K0157	Bb joint
1-7	SFLH-513S	Curved headjoint ass'y for 513R	24	51-K0066	Bb joint (prior to ser. # L00001)
3	51-N003	Lip plate for 511R,513R,515R	24	51-K130	Bb joint (prior to ser. #200001 & having mod. # beginning with SFL-)
3	51-N004	Lip plate for 611R,711R	25	51-K0160	G key
4	51-N001	Flute head stopper screw	25	51-K0035	G key (prior to ser. # L00001)
5	51-C101	Flute head stopper cork	25	51-K035	G key (prior to ser. #200001 & having mod. # beginning with SFL-)
6	51-N601	Flute head stopper nut	26	51-K0161	G# key
7	51-N402	Flute head crown	26	51-K0059	G# key (prior to ser. # L00001)
7	51-N401	Flute head crown (prior to ser. # L00001)	26	51-K036	G# key (prior to ser. #200001 & having mod. # beginning with SFL-)
3-8	SFLH-511S	Straight headjoint ass'y for 511R	27	51-K0058	Bb lever
3-8	SFLH-511HS	Straight headjoint ass'y for 511SC	27	51-K032	Bb lever (prior to ser. #200001 & having mod. # beginning with SFL-)
3-8	SFLH-511YS	Straight headjoint ass'y for 511SC-P	28	51-K0067	F# key
3-8	SFLH-611S	Straight headjoint ass'y for 611R,711R	28	51-K014	F# key (prior to ser. #200001 & having mod. # beginning with SFL-)
9	51-D004	Barrel joint for 511R,513R,515R,611R	29	51-K0162	F key
9	51-D005	Barrel joint for 711R	29	51-K0028	F key (prior to ser. # L00001)
10	51-D0032	Body ass'y w/out keys for 511R,513R, 515R,611R	29	51-K037	F key (prior to ser. #200001 & having mod. # beginning with SFL-)
10	51-D0004	Body ass'y w/out keys for 511R,513R, 515R,611R (prior to ser. # L00001)	30	51-K0163	E key
10	51-D003	Body ass'y w/out keys for 511R,513R, 515R,611R (prior to ser. #200001 & having mod. # beginning with SFL-)	30	51-K0060	E key (prior to ser. # L00001)
10	51-D0035	Body ass'y w/out keys for 711R	30	51-K038	E key for 511R,515R,611R,711R (prior to ser. #200001 & having mod. # beginning with SFL-)
10	51-D0013	Body ass'y w/out keys for 711R (prior to ser. # L00001)	31	51-K0134	Joint key
10	51-D013	Body ass'y w/out keys for 711R (prior to ser. #200001 & having mod. # beginning with SFL-)	31	51-K0061	Joint key (prior to ser. #K00001 & having mod. # beginning with SFL-)
11	51-D403	Body joint ring for 711R	32	51-K0164	D key
11	51-D409	Body joint ring for 511R,513R,515R, 611R	32	51-K0037	D key (prior to ser. # L00001)
12	51-W0014	Lower key post ass'y	32	51-K040	D key (prior to ser. #200001 & having mod.# beginning with SFL-)
13	51-W0010	Upper key post ass'y	33	51-D0037	C footjoint ass'y w/out key for 511R,513R, 515R,611R (**)
14	51-W0022	Key post ass'y	33	51-D0003	C footjoint ass'y w/out key for 511R,513R, 515R, 611R (**) (prior to ser. # L00001)
15	51-W0001	Key post ass'y	33	51-D021	C footjoint ass'y w/out key for 511R,513R, 515R,611R (prior to ser. #200001 & having mod. # beginning w/SFL-)
16	51-K0137	D# trill key	33	51-D0038	Low B footjoint ass'y w/out key for 511RB, 611RB
16	51-K0001	D# trill key (prior to ser. # L00001)	33	51-D0006	Low B footjoint ass'y w/out key for 511RB, 611RB (prior to ser. # L00001)
16	51-K001	D# trill key (prior to ser. #200001 & having mod. # beginning with SFL-)	33	51-D023	Low B footjoint ass'y w/out key for 511RB, 611RB (prior to ser. #200001 & having mod. # beginning w/SFL-)
17	51-K0154	D trill key	33	51-D0039	C footjoint ass'y w/out key for 711R
17	51-K0033	D trill key (prior to ser. # L00001)	33	51-D0009	C footjoint ass'y w/out key for 711R (prior to ser. # L00001)
17	51-K042	D trill key (prior to ser. #200001 & having mod. # beginning with SFL-)	33	51-D002	C footjoint ass'y w/out key for 711R (prior to ser. #200001 & having mod. # beginning with SFL-)
18	51-K0153	D# trill key lever	33	51-D0040	Low B footjoint ass'y w/out key for 711RB
18	51-K0017	D# trill key lever (prior to ser. # L00001)	33	51-D0012	Low B footjoint ass'y w/out key for 711RB (prior to ser. # L00001)
18	51-K041	D# trill key lever (prior to ser. #200001 & having mod. # beginning with SFL-)	33	51-D022	Low B footjoint ass'y w/out key for 711RB (prior to ser. #200001 & having mod. # beginning with SFL-)
19	51-K0139	C key	34	51-W0006	Key post ass'y (for R)
19	51-K0041	C key (prior to ser. # L00001)	34	51-W0012	Key post ass'y ( for RB)
19	51-K004	C key (prior to ser. #200001 & having mod. # beginning with SFL-)	35	51-K0149	D# key (for R)
20	51-K0057	Bb thumb lever	35	51-K0014	D# key (prior to ser. # L00001) (for R)
20	51-K006	Bb thumb lever (prior to ser. #200001 & having mod. # beginning with SFL-)			
21	51-K0049	B key			
21	51-K005	B key (prior to ser. #200001 & having mod. # beginning with SFL-)			
22	51-K0140	Bb key			
22	51-K0065	Bb key (prior to ser. # L00001)			
22	51-K043	Bb key (prior to ser. #200001 & having mod. # beginning with SFL-)			
23	51-K0159	A key			
23	51-K0026	A key (prior to ser. # L00001)			

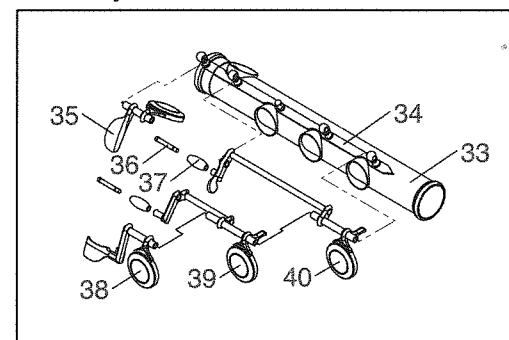
• **C Flute**  
**JFL-511R, RB, JFL-513R, JFL-515R,**  
**JFL-611R, RB, JFL-711R, RB**



Close & Open Hole Pads



B Footjoint



• **C Flute (2)**  
**JFL-511R, RB, JFL-513R, JFL-515R, JFL-611R, RB, JFL-711R, RB**

Dia. Ref.	Part No	Description
35	51-K020	D# key (prior to ser. #200001 & having mod. # beginning with SFL-) (for R)
35	51-K0165	D# key (for RB)
35	51-K0022	D# key (for RB) (prior to ser. # L00001)
35	51-K021	D# key (prior to ser. #200001 & having mod. # beginning with SFL-)
35*	51-C111	D# key bumper
36	51-C215	Low C key roller screw (for R)
36	51-C216	Low B key roller screw (for RB)
37	51-A102	Low C key roller
38	51-K0150	Low C# key (for R)
38	51-K0030	Low C# key (prior to ser. # L00001)
38	51-K022	Low C# key (prior to ser. #200001 & having mod. # beginning with SFL-)
38	51-K0166	Low C# key (for RB)
38	51-K0038	Low C# key (for RB) (prior to ser. #L00001)
38	51-K023	Low C# key (prior to ser. #200001 & having mod. # beginning with SFL-)
39	51-K0046	Low C key
39	51-K024	Low C key (prior to ser. #200001 & having mod. # beginning with SFL-)
39	51-K0167	Low C key (for RB)
39	51-K0054	Low C key (for RB) (prior to ser. # L00001)
39	51-K025	Low C key (prior to ser. #200001 & having mod. # beginning with SFL-)
40	51-K0168	Low B Gizmo key (improved design fits all #s)
40	51-K0070	Low B Gizmo key (improved design fits all #s) (prior to ser. # L00001)
41	51-P002	Pad set (thick) for 511R,611R,711R
41	51-P002A	Pad set (prior to ser. #200001 & having mod. # beginning with SFL-)
41	51-P005	Pad set (thick) for 511RB,611RB,711RB
41	51-P005A	Pad set (prior to ser. #200001 & having mod. # beginning with SFL-)
42	51-A301	Pad metal washer for closed hole
43	51-C202	Pad screw for closed hole
44	51-A401	Pad cap sleeve for open hole
16-17*	51-C109	Trill key bumper
16-31*	51-A5002	Knock pin
16-31*	51-A502	Knock pin (prior to ser. #H00001)
16-32*	51-C014	Shaft set (3 pcs. per set)
16-32*	51-C205	Pivot screw
16-32*	51-C205A	Pivot screw (prior to ser. #200001 & having mod. # beginning with SFL-)
16-39*	51-S001	Needle spring set
17*.18*.35*	51-C001	Cork for trill key & D# key
19-39*	51-C009	Rod screw set (4 pcs. per set) for 511R,611R,711R
19-39*	51-C010	Rod screw set (4 pcs. per set) for 511RB,611RB,711RB
20-21*	51-S101	Flat spring
20-21*	51-C204	Flat spring screw
21-39*	5A-P004	Pad plastic washer set (prior to ser. #200001 & having mod. # beginning with SFL-)
22-31*	51-C201	Adjusting screw
*	51-A0001	Felt set for 511,611
*	51-A001	Felt set for 711